

MONTHLY MEMBERSHIP PROGRESS REPORT

District 322 B1

Results as of: 10/31/2023

GMT:

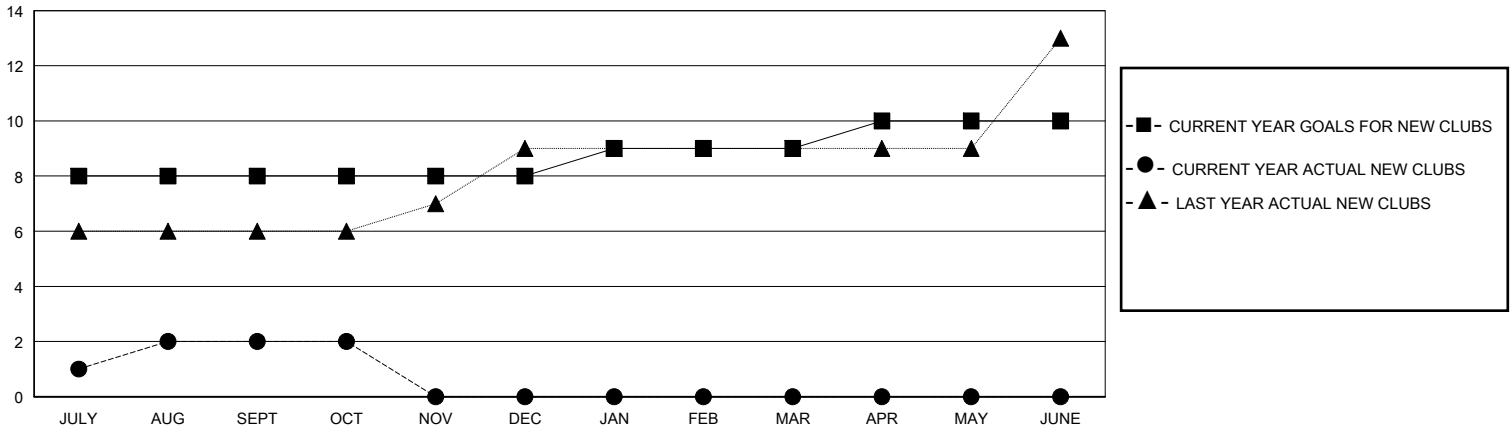
LOCATION INDIA

GMT CA

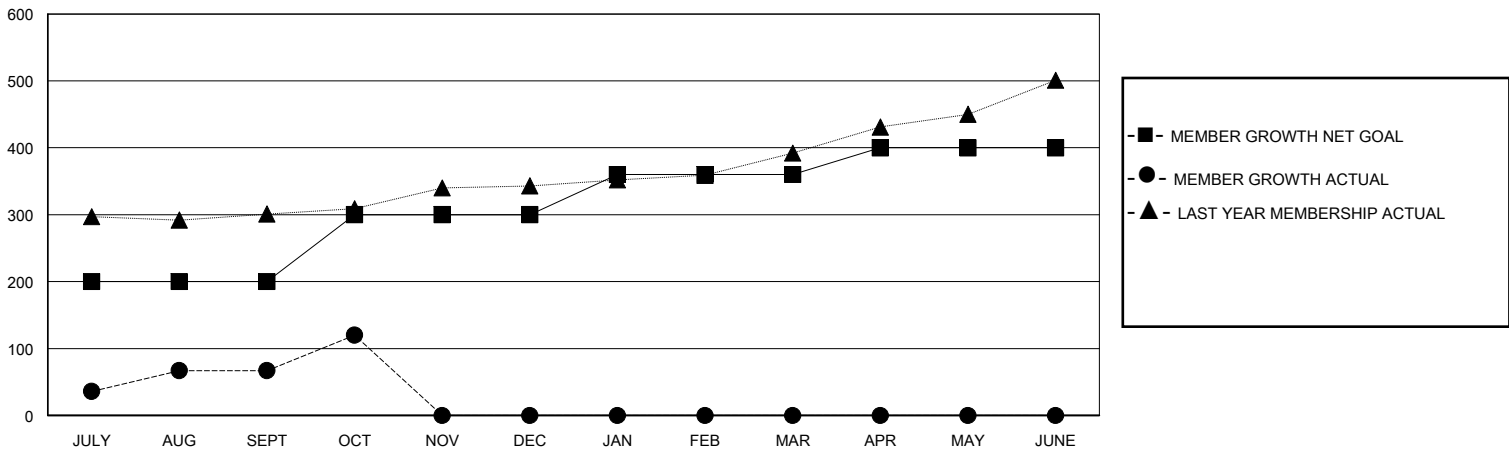
Clubs			
RESULTS FOR 2023-2024			
QUARTER	NEW CLUB GOAL	NEW CLUBS	DROPPED CLUBS
JULY/AUG/SEPT	8	2	2
OCT/NOV/DEC	0	0	0
JAN/FEB/MAR	1	0	0
APR/MAY/JUNE	1	0	0

Members			
RESULTS FOR 2023-2024			
QUARTER	MEMBER GROWTH NET GOAL	MEMBER GROWTH ACTUAL	DROPPED MEMBERS ACTUAL (including transfers)
JULY/AUG/SEPT	200	230	151
OCT/NOV/DEC	100	59	5
JAN/FEB/MAR	60	0	0
APR/MAY/JUNE	40	0	0

GOALS AND ACTUAL NEW CLUBS CUMULATIVE



GOALS AND ACTUAL MEMBERS CUMULATIVE



DROPPED CLUBS: 2	45 CLUBS OF 89 ADDED 1 OR MORE NEW MEMBERS	GENDER DISTRIBUTION MALE 2,489 (64.30%) FEMALE 1,382 (35.70%)
DROPPED MEMBERS DECEASED 5 CLUB CANCELLED 0 OTHER 151 TOTAL 156	CLICK HERE FOR CUMULATIVE MEMBERSHIP DATA	TOTAL FAMILY UNIT MEMBERS 1,828 FAMILY MEMBERS PAYING HALF DUES 1,056